



FEATURES

- Transient protection for high-speed data lines
IEC 61000-4-2(ESD) $\pm 15\text{KV}$ (Air)
 $\pm 8\text{KV}$ (Contact)
IEC 61000-4-4(EFT)40A(5/50ns)
Cable Discharge Event(CDE)
- Package optimized for high-speed lines
- Protects two I/O lines
- Ultra Low capacitance:0.2pf (typical between I/O channel)
- Low operating and clamping voltages

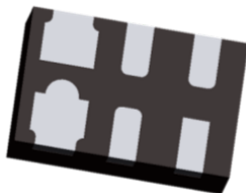
MACHANICAL DATA

- DFN1610-6L package
- Flammability Rating: UL 94V-0
- Terminal: Matte tin plated.
- Packaging: Tape and Reel
- High temperature soldering guaranteed:260°C/10s
- Reel size: 7 inch

ORDERING INFORMATION

- Device: LXE1610F5V0U
- Package: DFN1610-6L
- Marking: 0522P
- Material: Halogen free
- Packing: Tape & Reel
- Quantity per reel: 3,000pcs

PACKAGE OUTLINE



DESCRIPTION

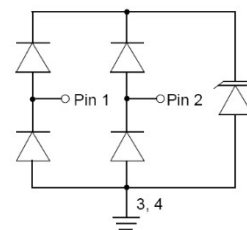
LXE1610F5V0U is an ultra-low capacitance Transient Voltage Suppressor (TVS) designed to protection for high-speed data interfaces. With typical capacitance of 0.2pF (I/O to I/O) only, LXE1610F5V0U is designed to protect parasitic-sensitive systems against over-voltage and over-current transient events. It complies with IEC 61000-4-2 (ESD), Level 4($\pm 15\text{KV}$ air, $\pm 8\text{KV}$ contact discharge), IEC61000-4-4 (electrical fast transient-EFT) (40A, 5/50ns), very fast charged device model (CDM) ESD and cable discharge event(CDE),etc.

LXE1610F5V0U uses ultra-small DFN1610-6L package. Each LXE1610F5V0U device can protect two high-speed data lines. The combined features of ultra-low capacitance, ultra-small size and high ESD robustness makes LXE1610F5V0U ideal for high-speed data ports and high-frequency lines (e.g., HDMI &DVI) applications. The low clamping voltage of the LXE1610F5V0U guarantees a minimum stress on the protected IC.

APPLICATIONS

- High Definition Multi-Media Interface (HDMI)
- USB 1.1/2.0/3.0/OTG
- IEEE 1394 Firewire Ports
- Projection TV Monitors and Flat Panel Displays
- Notebook Computers
- Set Top Box

CIRCUIT DIAGRAM





ABSOLUTE MAXIMUM RATING

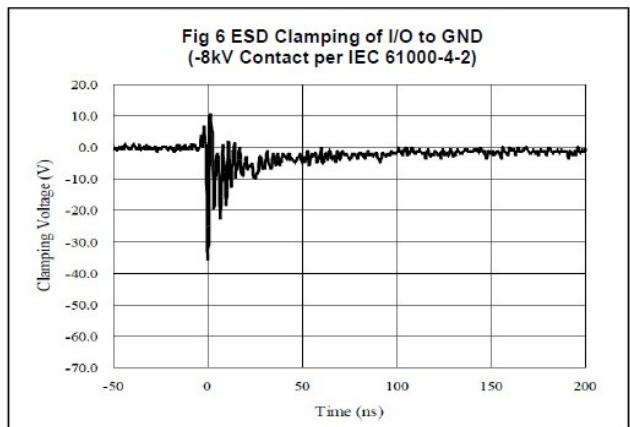
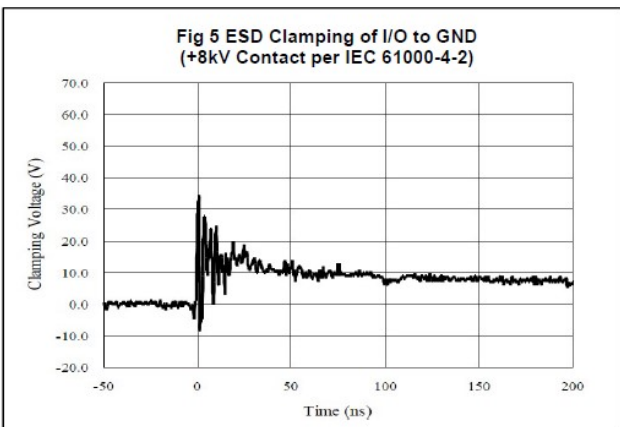
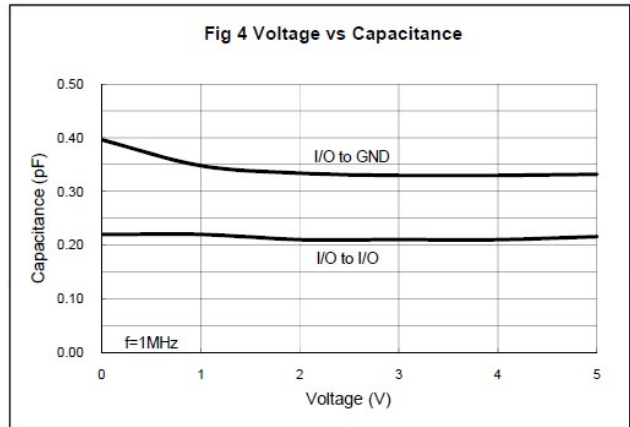
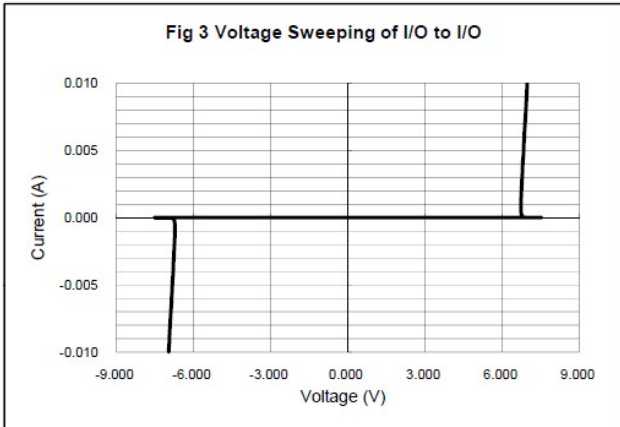
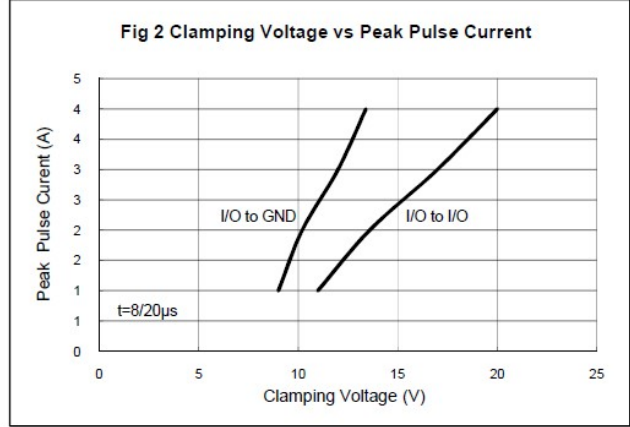
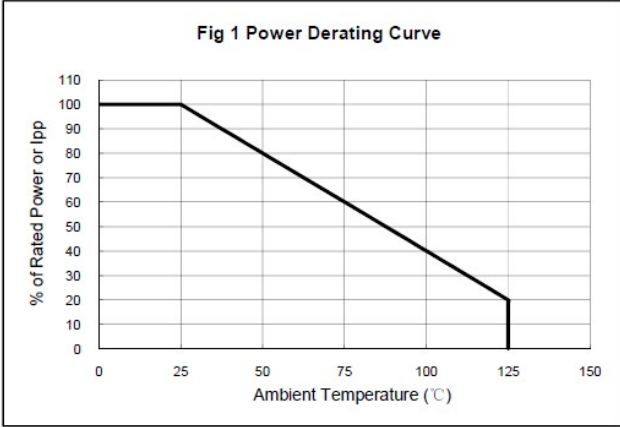
Symbol	Parameter	Value	Units
P _{PP}	Peak Pulse Power (8/20μs)	60	W
V _{ESD}	ESD per IEC 61000-4-2 (Air) ESD per IEC 61000-4-2 (Contact)	±30 ±20	kV
T _{OPT}	Operating Temperature	-55/+125	°C
T _{STG}	Storage Temperature	-55/+150	°C

ELECTRICAL CHARACTERISTICS (T_{amb}=25°C)

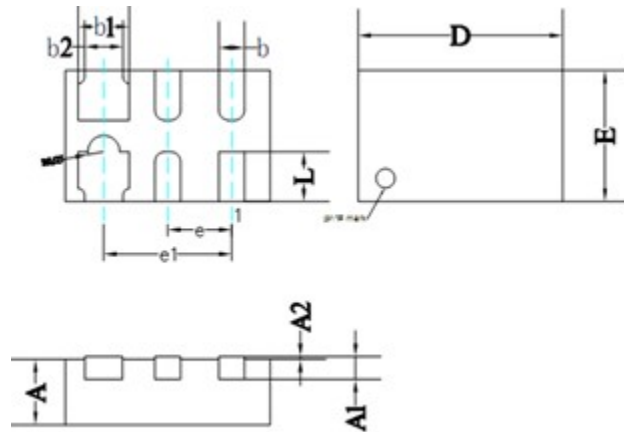
Symbol	Parameter	Test Condition	Min	Typ	Max	Units
V _{RWM}	Reverse Working Voltage	Any I/O pin to GND			5.0	V
V _{BR}	Reverse Breakdown Voltage	I _r = 1mA Any I/O pin to GND	6.0			V
I _R	Reverse Leakage Current	V _{RWM} = 5V Any I/O pin to GND			100	nA
V _F	Diode Forward Voltage	I _F = 15 mA Any I/O pin to GND			1.2	V
V _C	Clamping Voltage	I _{PP} = 1A, t _p = 8/20μs Any I/O pin to GND			10	V
		I _{PP} = 4A, t _p = 8/20μs Any I/O pin to GND			15	V
C _{ESD}	Capacitance	V _R = 0V, f = 1MHz Between I/O and GND		0.4	0.6	pF
C _{ESD}	Capacitance	V _R = 0V, f = 1MHz Between I/O and I/O		0.2	0.3	pF

Note: I/O pins are pin 1 and 2, GND pins are pin 3 and 4.

ELECTRICAL CHARACTERISTICS CURVE



DFN1610-6L PACKAGE OUTLINE DIMENSIONS



ALL DIMENSIONS IN MM

	MIN	NOM	MAX
D	1.55	1.60	1.65
E	0.95	1.00	1.05
L	0.33	0.38	0.43
b	0.15	0.20	0.25
b1	0.35	0.40	0.45
b2	0.25	0.30	0.35
e	0.50BSC		
e1	1.00BSC		
A	0.45	0.50	0.55
A1	0.15REF		
A2	0.00	–	0.05