



**Features**

- 68W (8/20µs) Peak Pulse Power
- Low Capacitance ESD Protection
- DFN1006-2 Package
- RoHS Compliant
- Matte Tin Lead finish (Pb-Free)
- Protect One High Speed Data Line
- Meet IEC61000-4-2 Level 4:  
Contact Discharge > 25kV  
Air Discharge > 25kV

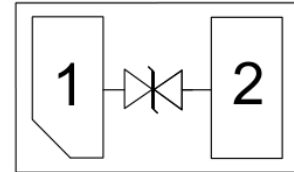
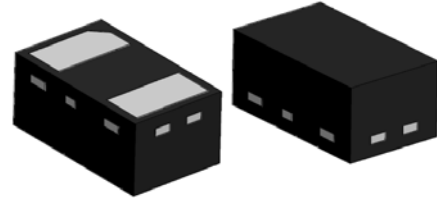
**Applications**

- Communication System
- Portable Instrumentation
- Audio and Video Equipment
- Computers and Peripherals
- USB 1.1, USB 1.0 Ports

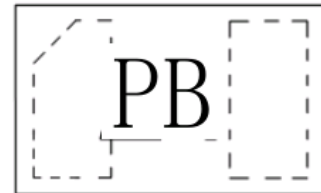
**Ordering information**

Type No.	Marking	Package Code
LXE5V15PB	PB	DFN1006-2

**Circuit Diagram**



**Package Outline**



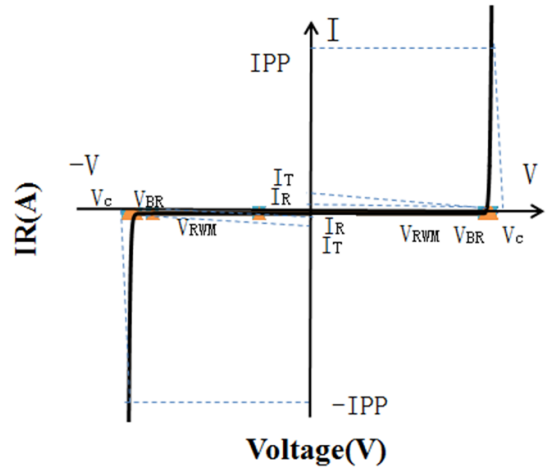
PB= Device Code

**Maximum Ratings (Ta = 25°C)**

Symbol	Parameter	Value	Unit
P <sub>PK</sub>	Peak Pulse Power	68	W
I <sub>PP</sub>	Peak Pulse Current	5	A
V <sub>ESD (Contact)</sub>	Contact ESD Voltage per IEC61000-4-2	25	kV
V <sub>ESD (Air)</sub>	Air ESD Voltage per IEC61000-4-2	25	kV
T <sub>J</sub>	Junction Temperature	-55 to +150	°C
T <sub>STG</sub>	Storage Temperature	-55 to +150	°C

**Portion Electronics Parameter**

Symbol	Parameter
$I_T$	Test Current
$I_{PP}$	Maximum Reverse Peak Pulse Current
$V_C$	Clamping Voltage @ $I_C$



**Electrical Characteristics (Ta = 25°C)**

Symbol	Parameter	Conditions	Min	Typ	Max	Unit
$V_{RWM}$	Reverse Working Peak Voltage				5	V
$V_{BR}$	Reverse Breakdown Voltage	$I_T = 1\text{mA}$	5.7		9	V
$I_R$	Reverse Leakage Current	$V_{RWM} = 5\text{V}$			0.1	$\mu\text{A}$
$V_C$	Clamping Voltage	$I_{PP} = 1\text{A}$ (8/20 $\mu\text{s}$ )			12	V
$V_C$	Clamping Voltage	$I_{PP} = 5\text{A}$ (8/20 $\mu\text{s}$ )			17	V
$C_J$	Capacitance	$V_R = 0\text{V}$ , $f = 1\text{MHz}$	8	8.9	15	pF

**SURGE CURRENT WAVEFORM:**

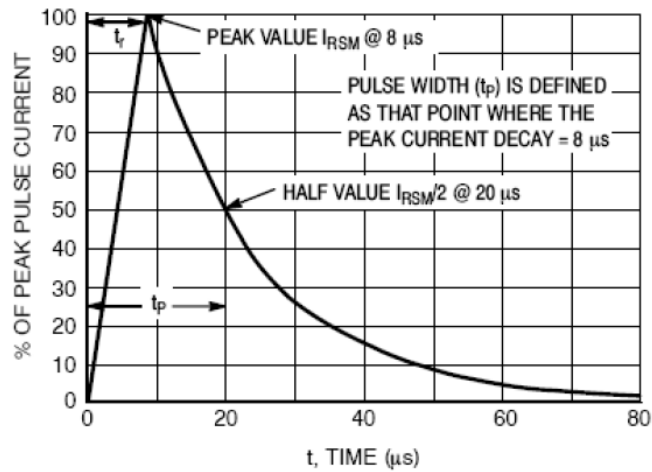
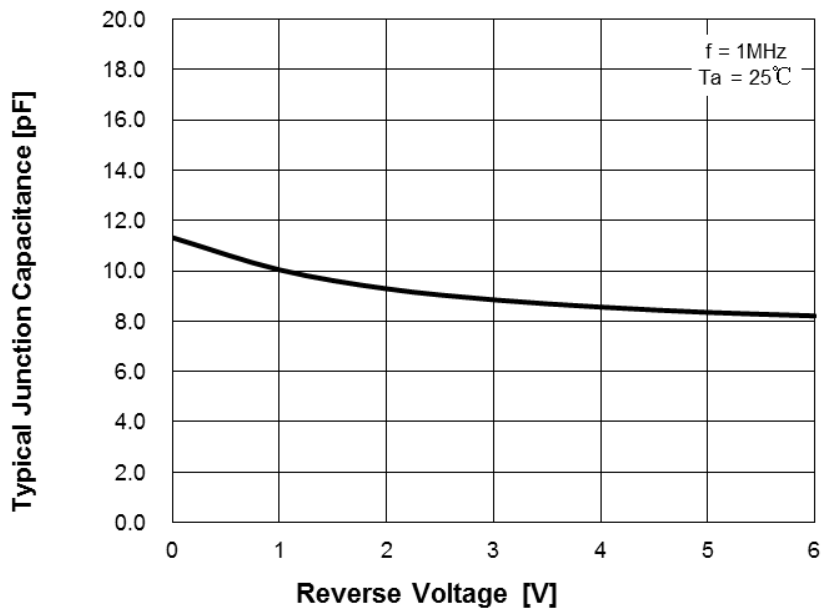


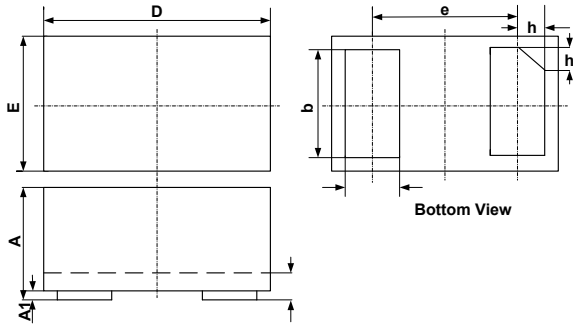
Figure 1. 8 x 20 µs Pulse Waveform

**CAPACITANCE CURVE:**



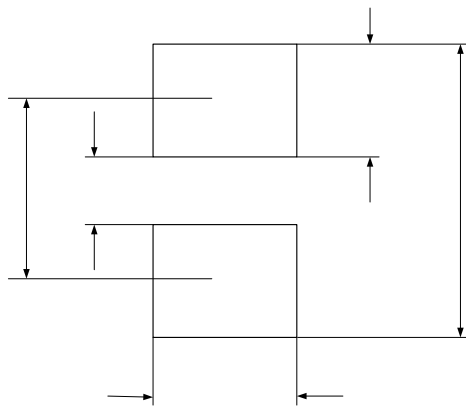


**DFN1006-2 Package Outline Drawing**



SYM	DIMENSIONS					
	MILLIMETERS			INCHES		
	MIN	NOM	MAX	MIN	NOM	MAX
A	0.45	0.50	0.55	0.018	0.020	0.022
A1	0.00	0.02	0.05	0.000	0.001	0.002
b	0.45	0.50	0.55	0.018	0.020	0.022
c	0.12	0.15	0.18	0.005	0.006	0.007
D	0.95	1.00	1.05	0.037	0.039	0.041
e	0.65 BSC			0.026 BSC		
E	0.55	0.60	0.65	0.022	0.024	0.026
L	0.20	0.25	0.30	0.008	0.010	0.012
h	0.07	0.12	0.17	0.003	0.005	0.007

**Suggested Land Pattern**



SYM	DIMENSIONS	
	MILLIMETERS	INCHES
X	0.60	0.024
Y1	0.50	0.020
Y2	0.30	0.012
Y3	0.80	0.032
Z	1.30	0.052